

RV Cefas Endeavour

James Parker

14th June 2017



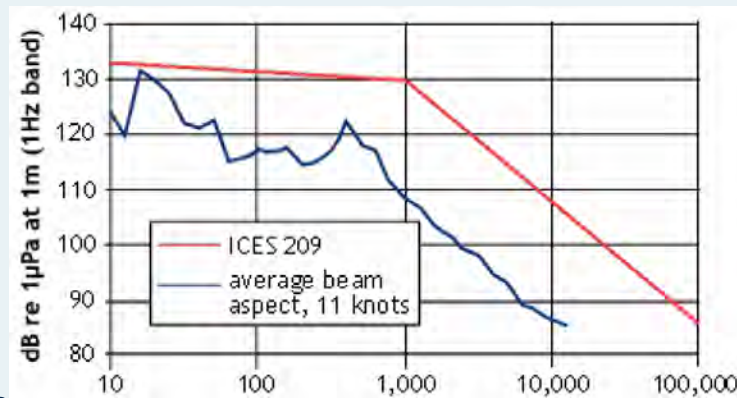
Centre for Environment
Fisheries & Aquaculture
Science



Cefas

RV Cefas Endeavour

- 74m (L), 16m (B), 5.5m/9.25m (D) purpose built research vessel
- ICES 209 compliant underwater radiated noise profile

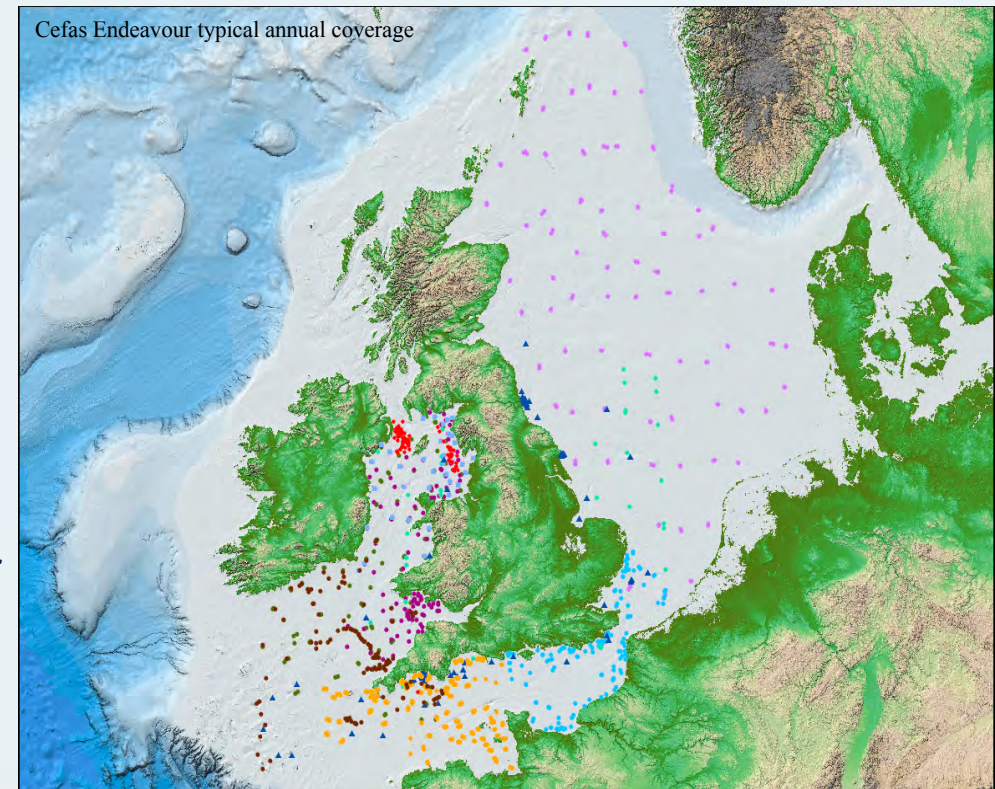


- Classification: *100A1 ICE CLASS ID, ICC, LMC, IP, UMS, CCS, DP(CM), Propulsion Drives in tandem, SCM, Multipurpose Research Vessel*



RV Cefas Endeavour

- Capacity: 35 persons (17 crew + 16/18 Scientists [2 x Twin + 14 x Single cabins])
- Endurance: 30 days
- Large back deck with ISO Container Points
- Extensive survey / lab facilities
- Suitable for:
 - Hydrographic surveys;
 - Oceanographic surveys;
 - Fisheries surveys;
 - Water quality surveys (incl. FerryBox, pCO₂ and marine litter sampler);
 - Environmental sampling surveys;
 - ROV/AUV recovery/deployment.



Recent/Upcoming Upgrades

- New VSAT communications system
- Fibre backbone onboard network
- Kongsberg EM2040 MBES (0.4° x 1° with ~600m depth capability)
- Seabed imaging down to 3,000m (HD camera, positioning beacons, fibre optic cable and winch upgrades)
- SBE-911 plus profiling CTD and SBE-32 Carousel Water Sampler (24 x 10l bottles)
- New fisheries sounders and calibration system (Q3 2017)
- Auto-Trawl Winch upgrades (Q4 2017)



Recent International Collaborations

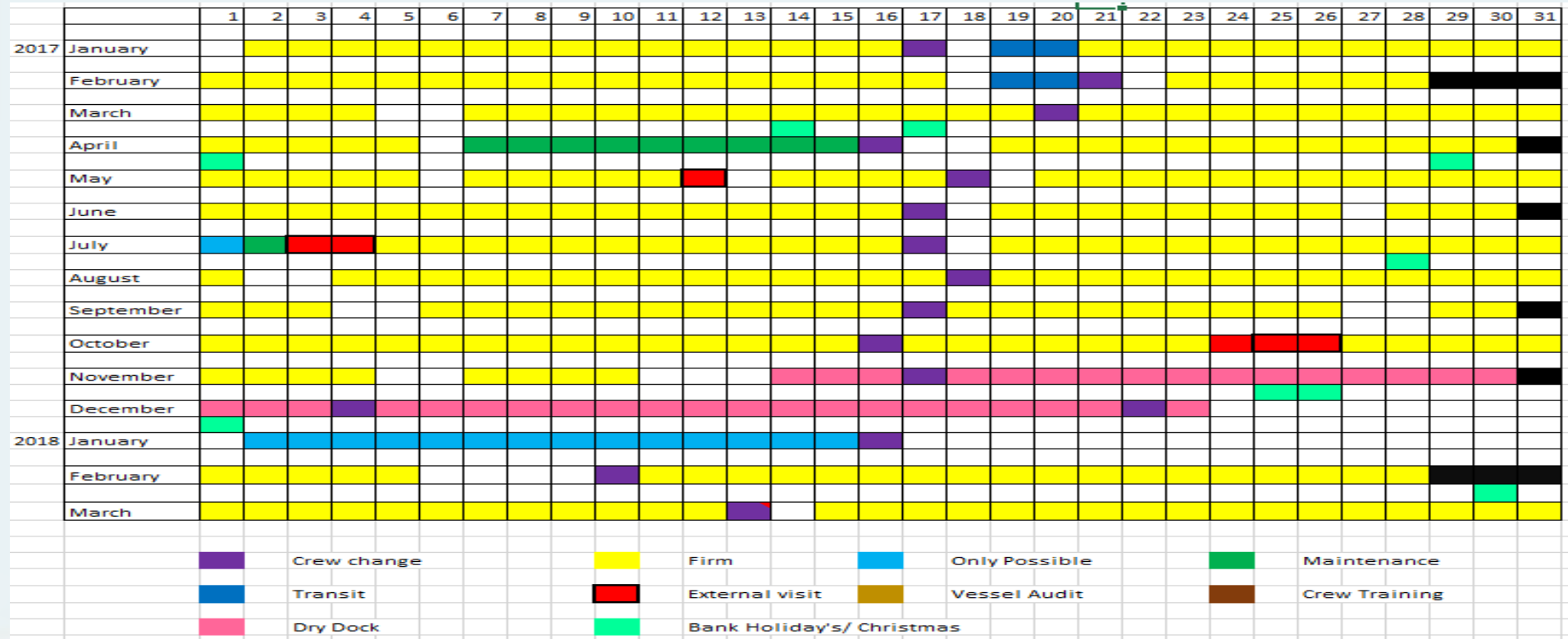
- 2015 & 2016: Netherlands (IMARES / RWS)



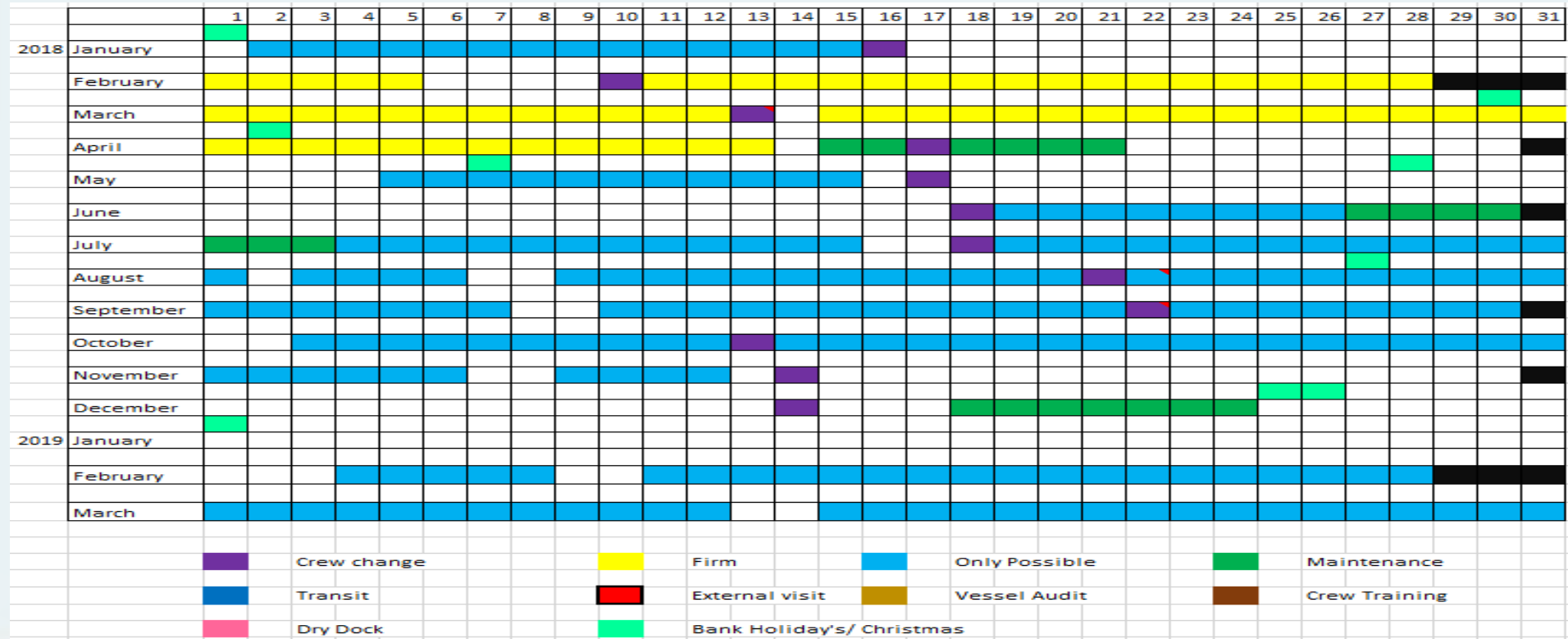
- 2017: Norway (IMR)



2017/2018 Schedule



2018/2019 Indicative Schedule



Thank you

rvenquiries@cefas.co.uk

www.cefas.co.uk

[@CefasGovUK](https://twitter.com/CefasGovUK)

www.linkedin.com/company/cefas



Centre for Environment
Fisheries & Aquaculture
Science

